

QUICK ATTACH



BUILT TO LAST

1-866-428-8224 • www.quickattach.com

Prices, financing and specifications subject to change without notice. Some photos may show optional configurations not included in standard MSRP.

**QUALITY.
VALUE.
RELIABILITY.**



OUR MISSION



Quick Attach® Attachments, LLC is a global leader in manufacturing, design, marketing and distribution of equipment for the attachments industry. Our strong employee centric values drive quality, value, performance, and affordability in everything we do. We are good corporate stewards to our customers, vendors, and the community, and always offer service and support that exceed their expectations.

Quick Attach builds safety and quality into our entire process. Our experienced and dedicated staff are here to serve you with industry leading engineering and design, testing and manufacturing, sales and shipping, and a commitment to service after the sale with parts and warranty. Count on us to listen to your needs and guide you to the right product for your job at the highest value!



SALES | SERVICE | PARTS | WARRANTY | SHIPPING | ENGINEERING

1-866-428-8224 • www.quickattach.com

Prices, financing and specifications subject to change without notice. Some photos may show optional configurations not included in standard MSRP.



EZ MOW™

COMMERCIAL BRUSH MOWER



Model	GPM	Part #
66" Low Flow	13-17	901601
66"	18-27	901603
72"	17-32	901604
78"	17-32	901605

Features

- The highest blade tip speeds in the industry
- Cut, clear and mulch unwanted brush, thickets, grass and saplings
- Break new trails, clear ditches, construction, property sites, and other overgrown areas
- Heavy-duty 1/4" steel deck
- Bi-directional

Options

- Blade kit
- Push Bar

BRUSH BUSTER™

INDUSTRIAL ROTARY BRUSH MOWER



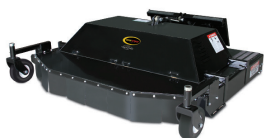
Model	GPM	Part #
66" Low Flow	13-17	901594
66"	18-27	901596
72"	17-32	901597
78"	17-32	901598

Features

- Unique automatic Float-n-Tilt™ system
- Cuts moving forward or reverse
- Bi-directional

Options

- Blade kit
- Push Bar



BRUSH BUSTER MAX™

DUAL ROTARY BRUSH MOWER

Model	GPM	Part #
84"	27-38	901505

Features

- Dual edge cutting blades to reverse blade rotation to double life
- Heavy-duty gear box to power through the toughest brush
- Designed for maximum cutting potential

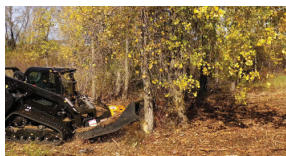
Options

- Wheel Kit
- Replacement Blade Kit

MEGA MOWER X™

INDUSTRIAL OPEN FRONT SKID STEER BRUSH CUTTER

Model	GPM	Part #
66"	15-25	901587
72"	15-25	901589
72" High Flow	25-41	901590
78"	18-25	901591
78" High Flow	25-41	901592



Features

- 10" cutting capacity
- Industry first serrated side plates allow for limbing of overhanging branches
- 12 carbide tipped thumbnail teeth line the bottom to aid in grinding and stirring material
- Open deck design and heavy-duty push bar make quick work of large saplings and small trees
- The industrial deck is reinforced for maximum cutting potential and long-term durability



XTREME MOWER HD™

EXTREME HEAVY-DUTY BRUSH MOWER



Model	GPM	Part #
72"	24.0-31.9	901358
72"	32.0-45.0	901359

Features

- Funneled open front design
- Push bar: heavy-duty 2x3 construction welded to the deck
- Radial piston hydraulic motor
- Tapered and armored design assists in cutting trees
- Strength of the deck boxed cross section has steel on 4 sides in a horse shoes shape and acts as the back bone of the deck
- Wire catchers for protection on the blade carrier
- ¼" thick grade 50 steel deck material
- Covered motor for protection
- Large in deck storage compartment



Options

- Blade kit

QUICK CLAW™

INDUSTRIAL GRAPPLE RAKE

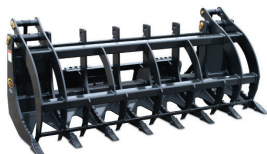
Model	Part #
60"	900316
72"	900317
84"	900318



Features

- Grade 100 steel teeth nearly three times stronger than regular steel
- 2 - 3,000 lb. hydraulic cylinders
- Opens to 48"





EAGLE TALON™

INDUSTRIAL LOG, BRUSH & ROCK GRAPPLE

Model	Part #
72"	900592
84"	900594

Features

- Grade 100 steel teeth nearly three times stronger than regular steel
- Gusseted between teeth for added strength
- 2 - 3,000 lb. cylinders
- Replaceable teeth tips



Options

- End Plates

ROCK HAUL™

SKELETON GRAPPLE ROCK BUCKET

Model	Part #
60"	925044
72"	925045
84"	925046

Features

- Gusseted tines for added strength
- 2 - 3,000 lb. cylinders



ROCK HAUL HD™

HEAVY-DUTY SKELETON GRAPPLE ROCK BUCKET

Model	Part #
72"	925059
84"	925060

Features

- Extra long tines for carrying larger loads
- Grade 50 steel bucket construction
- Gusseted tines for added strength
- Excellent for rooting and back dragging



VERSA GRAB™

MULTI-PURPOSE GRAPPLE

Model	Part #
48"	901315
60"	901316

Features

- 3-inch bore cylinder
- Closes to less than 3 inches
- Heavy-duty push bar
- Grade 100 steel tines
- Integrated 3-point mount, mounts to both skid steer and tractor

Options

- Hydraulic Rotation
- Winch

SKID STEER



MIGHTY DIG-N-GRAB™

GRAPPLE STUMP BUCKET

Model	Part #
Grapple Stump Bucket	900560

Features

- Three replaceable digging teeth
- Serrated sides to cut through roots
- Fulcrum point for added leverage while prying
- Heavy-duty grapple with greasable pins





Options

- Bolt-on Cutting Edge
- Bolt-on Teeth Bar

QUICK COMBO BUCKET™

4-IN-1 COMBINATION BUCKET

Model	Part #
66"	900523
72"	900525
80"	900527

Features

- 6 features in 1 bucket
- Good visibility to the front cutting edge
- Bucket bottom and clamshell are reinforced



Options

- Bolt-on Cutting Edge
- Bolt-on Teeth Bar
- End Plates

QUICK SCRAPE-N-GRAB™

GRAPPLE BUCKET

Model	Part #
66"	900611
72"	900612
84"	900614

Features

- Constructed of 1/2" high-strength steel and 7 gauge material
- 2 - 3,000 lb. cylinders



QUICK SPEAR™

BALE SPEAR

Model	Part #
Bale Spear Square	900693
Bale Spear Round	900692

Features

- Bolt-on tines for custom configurations
- Optional stacking extensions for multiple bale handling
- Open back design for operator visibility
- Additional tines available



MIGHTY DIG™ GRAPPLE STUMP BUCKET



Model **Part #**
Stump Bucket 900559

Features

- Three replaceable digging teeth
- Serrated sides to cut through roots
- Fulcrum point for added leverage while prying



QUICK MOVE/XHD™ LOW PROFILE MATERIAL BUCKET/XHD



Model	Part #	XHD Part #
66"	925001	925017
72"	925002	925018
78"	-	925019
84"	925004	925021

Options

- Bolt-on Cutting Edge
- Bolt-on Teeth

Features

- Grade 50 steel side plates 40% stronger than regular steel
- Excellent cutting edge visibility

ROCK SCOOP/HD™ SKELETON ROCK BUCKET/HD



Model	Part #	XHD Part #
60"	925038	-
72"	925039	925050
84"	925040	925051

Options

- End Plates

Features

- Extra long tines for carrying larger loads
- Tines designed to keep material from rolling forward
- Grade 50 steel and gusseted tines for added strength



QUICK SCOOP™

COMMERCIAL SPADE

Model	Part #
Commercial Spade	900809

Features

- Sharp digging point allows easy ground entry
- 1/4" high alloy steel
- Frame reinforcement



MUD HOPPER™

CONCRETE BUCKET

Model	Part #
Concrete Bucket	900731

Features

- Reduces back-breaking manual labor
- Transports and cleans up easily
- Hauls up to 1/2 yard of concrete



Options

- Mechanical Thumb

EZ DIG™

COMMERCIAL DIGGING BACKHOE

Model	Part #
DB240	901070
Bucket 9"	317990
Bucket 12"	317991
Bucket 15"	317992
Bucket 18"	317993
Bucket 24"	317994
Ditching Bucket 24"	317995

Features

- Hardened bushing inserts
- Abrasion resistant side plates



QUICK DIG™

INDUSTRIAL DIGGING BACKHOE



Options

- Mechanical Thumb

Model	Part #
DB240-S	901071
Bucket 9"	317990
Bucket 12"	317991
Bucket 15"	317992
Bucket 18"	317993
Bucket 24"	317994
Ditching Bucket 24"	317995

Features

- Hydraulic side swing
- Greasable pin points
- Abrasion resistant side plates

SKID STEER

QUICK XCAVATOR™

BACKHOE



Options

- Mechanical Thumb (1080)
- Hydraulic Thumb (1080)
- Street Pads (pair)

Model	Part #
BH780	901072
BH1080	901073
Bucket 9" (BH780)	318736
Bucket 12" (BH780)	318737
Bucket 15" (BH780)	318738
Bucket 18" (BH780)	318739
Ditching Bucket 18" (BH780)	318889
Bucket 9" (BH1080)	317990
Bucket 12" (BH1080)	317991
Ditching Bucket 12" (BH1080)	318887
Bucket 15" (BH1080)	317992
Bucket 18" (BH1080)	317993
Bucket 24" (BH1080)	317994
Ditching Bucket 24" (BH1080)	317995

Features

- Optimum performance with 5-7 GPM hydraulic system
- Dual cylinder swing provides maximum swinging power

SKID STEER



EZ AUGER™ (w/mounting system & hose kit)

COMMERCIAL EARTH AUGER

Model	GPM	Part #
9PD Hex	7-14	900756
12PD Hex	8-17	900757

Features

- Planetary drive unit produces high torque at low speeds
- Drills vertical or angled holes
- Self-centering and reverse rotation

Options

- Auger Bits (9", 12", 15", 18", 24")



BORE PIG™ (w/mounting system & hose kit)

INDUSTRIAL EARTH AUGER

Model	GPM	Part #
15 2" Hex	12-20	901760
15 2 9/16" Round	12-20	901762
19 2" Hex	15-25	901761
19 2 9/16"	15-25	901763
40PD 2" Hex / 2.5" Hex	20-35	901201 / 901202
45PD 2" Hex / 2.5" Hex	25-40	901203 / 901204
55PD 2" Hex / 2.5" Hex	35-50	901205 / 901206

Features

- Planetary gear drive for lower maintenance costs
- Available in 2", 2.5" hex or 2 9/16" round drive shafts
- Drills vertical or angled holes

Options

- Standard Duty Bits
- Heavy-Duty Bits
- Rock Style Bits
- Tree Style Bits



TRENCH-IT PRO™

HEAVY-DUTY TRENCHER



Features

- Manual side-shift comes standard
- Powerful hydraulic motor
- Heavy-duty built-in crumbler for loose soil remover
- Heavy-duty planetary drive system eliminates chain reduction
- Replaceable spoil auger
- Built-in skid shoe for auger depth control

SKID STEER

TX150 Model Pricing

	Part #
3' / 6" Double Cup	901210
3' / 8" Double Cup	901211
3' / 10" Double Cup	901212
3' / 12" Double Cup	901213
3' / 6" 50/50 Cup w/Bullet	901214
3' / 6" 50/50 Cup w/Scorpion	901215
3' / 6" 70/30 Cup w/Scorpion	901216
4' / 6" 50/50 Cup w/Bullet	901364
4' / 6" Double Cup	901217
4' / 8" Double Cup	901218
4' / 10" Double Cup	901219
4' / 12" Double Cup	901220
4' / 6" 50/50 Cup w/Bullet	901221
4' / 6" 50/50 Cup w/Scorpion	901222
4' / 6" 70/30 Cup w/Scorpion	901223
4' / 8" 50/50 Cup w/Bullet	901380
4' / 8" 50/50 Cup w/Scorpion	901391

TX250 Model Pricing

	Part #
3' / 6" Double Cup	901224
3' / 8" Double Cup	901225
3' / 10" Double Cup	901226
3' / 12" Double Cup	901227
3' / 6" 50/50 Cup w/Bullet	901228
3' / 6" 50/50 Cup w/Scorpion	901229
3' / 6" 70/30 Cup w/Scorpion	901230
3' / 6" 50/50 Cup w/Bullet	901365
4' / 6" Double Cup	901231
4' / 8" Double Cup	901232
4' / 10" Double Cup	901233
4' / 12" Double Cup	901234
4' / 6" 50/50 Cup w/Bullet	901235
4' / 6" 50/50 Cup w/Scorpion	901236
4' / 6" 70/30 Cup w/Scorpion	901237
4' / 8" 50/50 Cup w/Bullet	901375
4' / 8" 50/50 Cup w/Scorpion	901361
4' / 10" 50/50 Cup w/Bullet	901383

TX350 Model Pricing

	Part #
3' / 6" Double Cup	901238
3' / 8" Double Cup	901239
3' / 10" Double Cup	901240
3' / 12" Double Cup	901241
3' / 6" 50/50 Cup w/Bullet	901242
3' / 6" 50/50 Cup w/Scorpion	901243
3' / 6" 70/30 Cup w/Scorpion	901244
4' / 6" Double Cup	901245
4' / 8" Double Cup	901246
4' / 10" Double Cup	901247
4' / 12" Double Cup	901248
4' / 6" All Bullet	901334
4' / 6" 50/50 Cup w/Bullet	901249
4' / 6" 50/50 Cup w/Scorpion	901250
4' / 6" 70/30 Cup w/Scorpion	901251
4' / 8" 50/50 Cup w/Bullet	901393
4' / 8" All Bullet	901394
4' / 8" 70/30 Cup w/Scorpion	901377
4' / 12" 50/50 Cup w/Bullet	901385
5' / 6" Double Cup	901252
5' / 8" Double Cup	901386
5' / 10" Double Cup	901379
5' / 6" 50/50 Cup w/Bullet	901253
5' / 6" All Bullet	901427
5' / 6" 50/50 Cup w/Scorpion	901254
5' / 6" 70/30 Cup w/Scorpion	901255
5' / 10" 50/50 Cup w/Bullet	901362

1-866-428-8224 • www.quickattach.com

SKID STEER



LAND LEVELER™

PLANER

Model	Part #
Planer	900320

Features

- Level and grade landscape jobs faster
- Use for cutting or grading, sod peeling, dirt clod pulverizing

Options

- Hydraulic Scarifying Teeth
- Removable Material Screens



QUICK TILLER™

ROTARY TILLER

Model	GPM	Part #
66"	16-28	900913
78"	22-41	900915

Features

- Tills up to 6" deep
- Bidirectional rotation increases efficiency with time and labor
- Dual direct-drive motors give higher production with lower maintenance



EZ POWER SCAPE™ (rigid connection, manual angling)

COMMERCIAL SOIL CONDITIONER



Model	GPM	Part #
72" RSC72	15-33	900533
84" RSC84	15-33	900535
96" RSC96	15-33	901381

Features

- Direct-drive motor turns large 10" rotor
- Tungsten carbide teeth

Options

- Hydraulic Power Angling
- Wing Kit
- Large solid rubber wheels



SKID STEER

QUICK POWER SCAPE™ (floating connection, manual angling)

HEAVY-DUTY SOIL CONDITIONER



Model	GPM	Part #
72" FSC72	15-33	900534
84" FSC84	15-33	900536
96" FSC86	15-33	901382

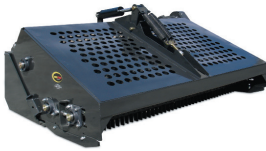
Features

- Direct-drive motor turns large 10" rotor
- Tungsten – carbide teeth
- Large solid urethane wheels
- Floating connection on FSC models provides automatic leveling that follows contour of the ground

Options

- Hydraulic Power Angling
- Wing Kit





STONE DAWG™ LANDSCAPE RAKE

Model	GPM	Part #
Landscape Rake	13-25	900562

Features

- Picks up material as small as 3/4"
- Adjustable side skids for setting depths
- Top cover opens hydraulically for easier dumping

Options

- Replacement Bolt-on Rake Bar



Options

- Acre Meter Package
- Mud Scraper Package

SUPER SEEDER™ LANDSCAPE SEEDER

Model	Part #
Landscape Seeder 72"	900812
Landscape Seeder 96"	900814

Features

- Front rollers crush lumps, press down small stones, and form a firm seedbed
- 3-point hitch for tractors and mounting plate for skid steers
- Notched rollers place most of the seed at a depth of 1/2"



QUICK TURF™ SOD ROLLER

Model	Part #
Sod Roller	901337

Features

- Handle sod rolls 24"- 48" wide
- Automatic brake for controlled handling
- Relief valve to protect sod rolls from over-squeezing



POWER CLAW™ COMMERCIAL TREE PULLER

Model	Part #
Commercial Tree Puller	900632

Features

- Pull small trees, brush and posts quickly and efficiently
- Push bar to keep branches away from door comes standard
- Minimal disturbance to ground, won't leave stumps or roots

SKID STEER



XTREME POWER CLAW™ HEAVY-DUTY TREE PULLER

Model	Part #
Heavy-Duty Tree Puller	901770

Features

- Push bar for prying and added leverage
- Serrated gusset and jaws for ripping
- Wedge shaped for digging
- Simple single cylinder design
- Geared jaws for timed opening and closing
- 5" cylinder for maximum clamping force



TREE JACK™

TREE SPADE

Model	Part #
Tree Spade 3S	901165
Tree Spade 4S	901166

Features

- Tree Spade comes complete and ready to use, including all-hydraulic hoses, and controls
- Good for transplanting hardwood trees up to 3" diameter and evergreens up to 4"
- Steel cutting blades are 3/8" thick
- Adjustable control valve stand
- All joints outfitted with grease fittings
- Removable blades for easy sharpening
- Short frame design for increased down-pressure reducing the need for rear stabilizers

Options

- External Control (wired or wireless)



EZ AXE™

COMMERCIAL TREE SHEARS

Model	Part #
Commercial Tree Shears	900630

Features

- Cuts up to 12" diameter trees
- Near ground cutting
- Shear blade comprised of AR400 abrasion resistance high tensile steel



POWER AXE™ INDUSTRIAL TREE SHEARS

Model	Part #
Tree Shears	900631
Hydraulic Rotation	316714

Features

- Cuts up to 14" diameter trees
- Near ground cutting
- Shear blade comprised of AR400 abrasion resistant high tensile steel



SKID STEER



QUICK SPLIT™ INVERTED LOG SPLITTER

Model	Part #
24"	901748
36"	901749

Features

- Inverted horizontal splitter orientation
- Splits logs 24" or 36" in length
- 7 second average cycle time
- Unique stackable wedge allows for multiple configurations





QUICK STUMP PLANER™ STUMP REMOVAL BIT

Model	Part #
Stump Planer Bit 2 9/16" Round 16"	329271
Stump Planer Bit 2" Hex 16"	329270
Stump Planer Bit 2 9/16" Round 12"	329269
Stump Planer Bit 2" Hex 12"	329268

Features

- ¾" Flighting
- Dual Cutting Edges (sharpen-able, replaceable), engineered alloy
- Spiral Center Point (replaceable), engineered to pull stump auger into the stump
- 12" Bits are 48lbs
- 16" Bits are 70lbs

QUICK STUMP-AWAY™ STUMP GRINDER



Model	Part #
Standard Flow	900550
High Flow	900551

Features

- 1/2" x 24" diameter steel plate cutting wheel
- Up to 1,100 RPM cutting wheel speed
- Maximum cutting depth 8" below ground

Options

- Replacement Teeth
- Pistol Grip
- Machine Specific Wire Harness



BIG CHIPPER™

BRUSH CHIPPER

Model	Part #
Standard Flow	900790
High Flow	900791

Features

- Direct hydraulic drive and fly-wheel design make for low maintenance and efficient chipping
- Independent hydraulic feed system controls allows user complete control of feeding rate into the chipper
- 2 attach plates on both sides of the chipper allow skid steer to be attached either perpendicular or parallel for best maneuverability

Options

- Chipper Blade Kit



SKID STEER



QUICK MULCH™

HEAVY-DUTY FORESTRY MULCHER

Model	Part #
HFM 1000 w/Carbide Teeth	900924
HFM 1100 w/Carbide Teeth	900922
HFM 1200 w/Carbide Teeth	900923
HFM 1300 w/Carbide Teeth	900925
HFM 1000 w/Steel Teeth	901398
HFM 1100 w/Steel Teeth	901396
HFM 1200 w/Steel Teeth	901397
HFM 1300 w/Steel Teeth	901399

Features

- Double helix teeth pull material toward the attachment
- High-strength timing belt to prevent slippage and wear
- 3-position adjustable push bar for desired working angle

Options

- Replacement Teeth



SKID STEER



THE RAGE™ FORESTRY MULCHING MOWER

Model Forestry Mulching Mower
Part # 901352

Features

- Parker Piston Motor is Made in Sweden with the highest quality materials and featuring maximum starting torque
- Motor is covered and a storage compartment on deck stores tools such as replacement tooth ratchet
- 1,045 pounds of disc mass unleashes massive amounts of rotational energy to destroy trees and brush
- 1.5" thick disc is the most durable in the industry and consists of one 3/4" plate and two 3/8" plates
Top deck is made of grade 50 steel for maximum strength and durability
- Curved shroud at disc rear creates a smooth, consistent mulching chamber increasing efficiency
- Optional replaceable carbide teeth are designed to withstand contact with rocks and ground debris
- Perimeter cutting teeth are designed to rotate as they wear and easily replaceable
- Tooth holders are heat treated to withstand tough wear and tear with no cracking

XTENDA REACH™

TELEBOOM

Model Teleboom
Teleboom 900770
Part # Manual Teleboom 900771

Features

- 72" hydraulic stroke allows for adjustments from the comfort of your cab
- Strong, lightweight tubular steel
- 256" Fully Extended
- Ideal for general construction, truss installation, and material handling





VERSA BLADE™

6-WAY DOZER BLADE/GRADER/LEVELER

Model	Part #
78"	900512
90"	900514
96"	900516

Options

- Grading/ Leveling Combo Package
- Wing Kit

Features

- Adjustable depth skid shoes for control of cutting edge design
- Bolt-on reversible cutting edge
- Reversible bilateral cutting ends

SKID STEER



QUICK SLEDGE™

POST DRIVER

Model	Part #
Post Driver	900702

Features

- Manually adjusted variable speed to adjust strokes per minute
- Up to 40 blows per minute
- Drives posts straight and true on almost any terrain

Options

- Steel Shot Ballast - 200 lb.



PILE DRIVER™

HYDRAULIC POST DRIVER

Model	Part #
Pile Driver 750	901675
Pile Driver 1150	901676

Features

- Extra durable 3/4" plate steel side plates and frame for maximum durability
- Excellent visibility makes it very easy to use for all operators
- Includes chain to plumb new and remove old posts
- Heavy duty cupped driving hammer comes standard
- Standard flow design works on almost all skids



QUICK MIX™

CONCRETE MIXER

Model	Part #
2" Hex	330763
2 9/16" Round	330764

Features

- 47 gallon capacity
- 12 gauge steel construction
- Easily converts your auger into a portable concrete mixer
- Allows for excellent operator visibility



BIG BREAK™ (w/moil tool point and mounting plate) HYDRAULIC BREAKER

Model	Part #
750	901673
1150	901674

Features

- Power booster for high performance and low vibration
- Central lubrication
- Field replaceable bushing for easier maintenance
- Hybrid technology (gas/oil)
- Innovative design with fewer components for higher reliability
- Effective noise and vibration damping
- Includesmoil and chisel bit



SKID STEER

QUICK MILL™ COLD PLANER

Model	GPM	Part #
18" 4-Function CP18	22-40	900938
24" 4-Function CP24	25-45	900939
36" 4-Function CP36	25-45	901430
48" 4-Function CP48	25-45	901431

Features

- Electro-hydraulic tilt controls allow operator to adjust the position of the drum to match exact job requirements
- Two tools in one; cut both asphalt and concrete
- Hydraulic side-shift feature moves planer from left to right



SKID STEER



RAZOR TOOTH™ PAVEMENT SAW

Model	Part #
915PS	901196
925PS	901182
945PS	901183

Features

- 9" cutting depth ideal for cutting patches and expansion joints to make pavement cuts for utility lines and traffic loops
- Electro-hydraulic side-shift enables the saw to cut close to walls, curbs, and fixed objects
- Built-in shroud retracts as cutting depth increases

XTREME CUT™ HD ROCK SAW

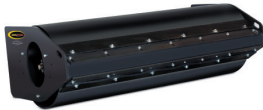


Model	GPM	Part #
18HDRS	22-60	901306
24HDRS	25-60	901307

Features

- Patented electro-hydraulic side-shift allows operator to maneuver close to buildings and other obstacles
- Electro-hydraulic depth control eliminates laborious adjustments

QUICK PACK™ VIBRATORY PACKER



Model	GPM	Part #
72" Smooth Drum	11-22	900722
72" Padded Drum	11-22	900723

Features

- Offset drum design allows the right side of the roller to extend past the machine
- Dual-direction vibration motor permits compaction traveling in either direction
- Drum rubber isolation mounts reduces vibration transfer



QUICK LIFT-N-STACK™

PALLET FORKS

Walk Thru Model	Part #	Model	Part #
42" #3700	901647	42" #3700	901642
48" #3700	901643	48" #3700	901648
42" #5500	901639	42" #5500	901644
48" #5500	901640	48" #5500	901645
60" #5500	901641	60" #5500	901646

Features

- Adjustable width from 8" to 45"
- Brick guard is standard equipment
- 3700 or 5500 LB capacity

Options

- Receiver Hitch

SKID STEER

POWER LIFT-N-STACK™

HYDRAULIC PALLET FORKS

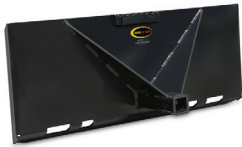


Model	Part #
48"	900708
60"	900709

Features

- Forks move in and out simultaneously
- Bolt-on steps assist in getting in and out of skid steer
- 48" and 60" models available
- 5500 LB capacity



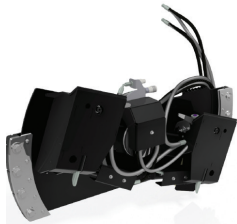


SKID HITCH™ SKID STEER HITCH

Model	Part #
Skid Steer Hitch	900641

Features

- Move equipment quickly without breaking your back
- Direct and guide into tight quarters



QUICK TILT-TACH™ TILT ATTACHMENT

Model	Part #
Tilt Attachment	900639

Features

- Rotates left or right up to 17° with equal operation and speed when tilting in either direction
- Perfect for machine control applications using laser or sonic-guided equipment

Options

- Hydraulic Control Valve Kit



QUICK SWEEP™

POWER ANGLE BROOM



Features

- Designed for year-round productivity
- Exclusive Torsion Float Suspension
- 25° right and left angle (manual or optional hydraulic)

Options

- Wafer Package
- Pistol Grip Control
- Machine Specific Electrical Harness

Model

680 (Man. Angling w/poly)	901050
680 (Man. Angling w/poly/steel)	901051
680X (Hyd. Angling w/poly)	901053
680X (Hyd. Angling w/poly/steel)	901054
680XL (Hyd. Angling, Reversible w/poly)	901140
680XL (Hyd. Angling, Reversible w/poly/steel)	901141
840 (Man. Angling w/poly)	901056
840 (Man. Angling w/poly/steel)	901057
840X (Hyd. Angling w/poly)	901059
840X (Hyd. Angling w/poly/steel)	901060
840XL (Hyd. Angling, Reversible w/poly)	901143
840XL (Hyd. Angling, Reversible w/poly/steel)	901144
960 (Man. Angling w/poly)	901123
960 (Man. Angling w/poly/steel)	901124
960X (Hyd. Angling w/poly)	901126
960X (Hyd. Angling w/poly/steel)	901127
960XL (Hyd. Angling, Reversible w/poly)	901146
960XL (Hyd. Angling, Reversible w/poly/steel)	901147

Part

901050
901051
901053
901054
901140
901141
901056
901057
901059
901060
901143
901144
901123
901124
901126
901127
901146
901147

SKID STEER



QUICK SWEEP HD™

HEAVY-DUTY POWER ANGLE BROOM

Features

- 8° floating tilt allows broom to follow ground contour
- Oversized 4" bearing on arbor
- Angle side to side 30 degrees (optional hydraulic)

Options

- Wafer Package
- Pistol Grip Control
- Machine Specific Electrical Harness

Model	Part #
720HD (Man. Angling w/poly)	901514
720HD (Man. Angling w/poly/steel)	901515
720HDX (Hyd. Angling w/poly)	901517
720HDX (Hyd. Angling w/poly/steel)	901518
720HDXL (Hyd. Angling, Reversible w/poly)	901520
720HDXL (Hyd. Angling, Reversible w/poly/steel)	901521
840HD (Man. Angling w/poly)	901523
840HD (Man. Angling w/poly/steel)	901524
840HDX (Hyd. Angling w/poly)	901526
840HDX (Hyd. Angling w/poly/steel)	901527
840HDXL (Hyd. Angling, Reversible w/poly)	901529
840HDXL (Hyd. Angling, Reversible w/poly/steel)	901530
960HD (Man. Angling w/poly)	901532
960HD (Man. Angling w/poly/steel)	901533
960HDX (Hyd. Angling w/poly)	901535
960HDX (Hyd. Angling w/poly/steel)	901536
960HDXL (Hyd. Angling, Reversible w/poly)	901538
960HDXL (Hyd. Angling, Reversible w/poly/steel)	901539



CLEAN SWEEP™

PICK-UP BROOM

Model	Part #
60" (w/poly wafer package)	901207
60" (w/poly/steel wafer package)	901208
72" (w/poly wafer package)	901062
72" (w/poly/steel wafer package)	901063
84" (w/poly wafer package)	901065
84" (w/poly/steel wafer package)	901066

Options

- Wafer Package
- Curb Sweeper
- Water Kit

Features

- Adjustable arbor mount controls bristle pressure to surface to extend bristle life
- Reversible bolt-on cutting edge
- Completely covered to control dust

SKID STEER



CLEAN SWEEP HD™

HEAVY-DUTY PICK-UP BROOM

Model	Part #
72" (w/poly wafer package)	901466
72" (w/poly/steel wafer package)	901467
84" (w/poly wafer package)	901470
84" (w/poly/steel wafer package)	901471

Options

- Wafer Package
- Water Kit
- Curb Sweeper
- Curb Sweeper Replacement Bristle

Features

- Large 26" diameter wafers for longer life
- Reversible bristle direction for multi-purpose
- Completely covered to control dust



RAIN MAKER™

DUST CONTROL WATER KIT

Model	Part #
Dust Control Water Kit	901110

Features

- Compatible with most broom attachments on the market
- Large 40 gallon capacity for less frequent refills
- Self-contained unit, no skid steer modification required

Options

- Additional Spray Boom





Options

- Urethane Cutting Edge
- Rubber Cutting Edge
- Urethane Skid Shoes
- Wing Kit

QUICK PUSH™

SNOW/LIGHT MATERIAL BLADE

Model	Part #
72" manual / hydraulic	900341 / 900340
84" manual / hydraulic	900343 / 900342
96" manual / hydraulic	900345 / 900344
108" manual / hydraulic	900347 / 900346

Features

- 28" curved moldboard
- Moldboard has four (4) trip springs for component protection
- Strong, high-carbon steel cutting edge for long life



Options

- Bolt-on Cutting Edge

BIG BUCKET™

SNOW/LIGHT MATERIAL BUCKET

Model	Part #
72"	901660
84"	901661
96"	901662
108"	901663

Features

- 3/8" grade 50 steel
- 3/8" grade 50 steel construction wear bars

EZ PUSH™

COMMERCIAL SNOW PUSHER

Model	Part #
96"	901121
120"	901122

Features

- Adjustable height skid shoes and bolt-on cutting edge
- Excellent operator visibility
- Gusseted end plates for strength

Options

- Urethane Cutting Edge
- Rubber Cutting Edge
- Pull Back





XTREME PUSH™ INDUSTRIAL SNOW PUSHER

Model	Part #
96"	900782
120"	900783

Features

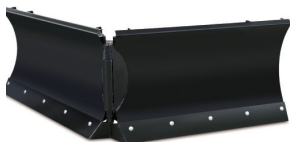
Options

- Urethane Cutting Edge
- Rubber Cutting Edge
- Replacement Steel Cutting Edge
- Pullback System
- 37" high side panels
- Strong, high-carbon steel cutting edge for long life
- Adjustable height skid shoes
- Tubular steel frame for added strength

SNOW BREAK™ V-PLOW SNOW PUSHER

Model	Part #
84"	900784
96"	900785
108"	900786

Features



- Two-way hydraulic only control provides full moldboard control in V, scoop, left and right positions
- Trip edge utilizing four extension springs
- Floating moldboard and adjustable cast skid shoes
- Hardened Skid Shoes

POWER SPREADER™ SALT, SAND & FERTILIZER SPREADER

Model	Part #
Salt, Sand & Fertilizer Spreader	900761

Features

- Scoop design for easy loading from the cab
- Large steel hopper for best efficiency
- Hydraulic spinner with variable speed flow control

Options

- Sidewalk Kit



SKID STEER



Options

- Urethane Skid Shoes
- Urethane or Rubber Cutting Edge

EZ SNOW-AWAY™
COMMERCIAL HYDRAULIC SNOWBLOWER

Model	GPM	Part #
2020LT 61"	11-25	901464
2020LT 73"	11-25	901449
2020LT 79"	11-25	901451
2020LT 85"	11-25	901453

Features

- Direct-Drive hydraulic auger
- Replaceable bolt-on high-carbon steel cutting edge
- Hydraulic relief – no shear pins
- Hydraulic control valve with electric solenoid controls all chute functions
- Easily adjustable depth skid shoes are included



2020 2420 2420XL

Options

- Urethane Skid Shoes
- Urethane or Rubber Cutting Edge
- Hydraulic Truck Loading Chute (for 2420 & 2420XL models)

QUICK SNOW-AWAY™
INDUSTRIAL HYDRAULIC SNOWBLOWER

Model	GPM	Part #
2020 48"	11-25	901442
2020 55"	11-25	901444
2020 61"	11-25	901446
2020 73"	11-25	901448
2020 79"	11-25	901450
2020 85"	11-25	901452
2420 55"	24-38	901454
2420 61"	24-38	901455
2420 73"	24-38	901456
2420 79"	24-38	901457
2420 85"	24-38	901458
2420XL 61"	30-50+	901459
2420XL 73"	30-50+	901460
2420XL 79"	30-50+	901461
2420XL 85"	30-50+	901462
2420XL 96"	30-50+	901463

Features

- Direct drive hydraulic auger
- Replaceable bolt-on high carbon steel cutting edge
- Hydraulic relief – no shear pins
- Hydraulic control valve with electric solenoid controls all chute functions with built-in pressure relief system eliminating the need for shear pins
- Easily adjustable depth skid shoes
- Throws snow up to 40'



POWER PACK™

HYDRAULIC POWER UNIT

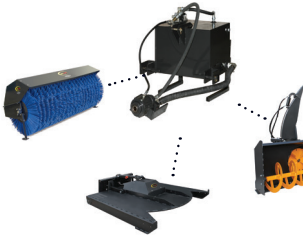
Model	PTO Range	Part #
HP15	30-43 HP	900900
HP20	44-53 HP	900901
HP24	54-75 HP	900902

Features

- 3,000 psi pressure relief valve
- Provides hydraulic power to operate front loader attachments
- Heavy-duty 11 gauge steel tank featuring 25 gallon oil capacity

Options

- Oil Cooler



TRACTOR

POWER PACK™ HP35

COMMERCIAL HIGH FLOW HYDRAULIC

Model	PTO Range	Part #
HP35	80-150 HP	920284

Features

- Provides high flow hydraulic power to operate front loader attachments
- Heavy-duty 10 gauge steel tank holds 33 gallon oil capacity
- 1,000W tank heater and thermometer are standard
- Oil cooler
- 540 RPM input, Cat II and III
- 4,000 psi





QUICK SNOW-AWAY™ 2020 W/POWER PACK™ SNOWBLOWER W/HYDRAULIC POWER UNIT

Model	Part #
48" w/HP15	901476
55" w/HP15	901477
61" w/HP15	901478
61" w/HP20	901481
61" w/HP24	901484
73" w/HP15	901479
73" w/HP20	901482
73" w/HP24	901485
79" w/HP15	901480
79" w/HP20	901483
79" w/HP24	901486
85" w/HP24	901487

Options

- Urethane Skid Shoes
- Urethane Cutting Edge
- Rubber Cutting Edge

Features

- Direct-drive hydraulic auger
- Replaceable bolt-on high-carbon steel cutting edge
- Hydraulic relief – no shear pins
- Hydraulic control valve with electric solenoid controls all chute functions



QUICK SNOW-AWAY™ 2420XL W/ POWER PACK™ HP35

2420XL HYDRAULIC SNOWBLOWER W/ COMMERCIAL HIGH FLOW HYDRAULIC POWER UNIT

Model	Part #
73" w/HP35	920290
79" w/HP35	920291
85" w/HP35	920292
96" w/HP35	920293

Features

- Direct-drive hydraulic auger
- Replaceable bolt-on high-carbon steel cutting edge
- Hydraulic relief – no shear pins
- Hydraulic control valve with electric solenoid controls all chute functions

Options

- Urethane Skid Shoes
- Urethane Cutting Edge
- Rubber Cutting Edge



EZ SNOW-AWAY™ RM

3-POINT PTO COMMERCIAL REAR MOUNT SNOWBLOWER

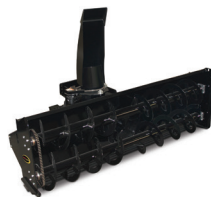
Model	Part #
520RM (54")	920140
620RM (60")	920141
725RM (72")	920142
825RM (84")	920143

Options

- Hydraulic Chute Rotation
- Hydraulic Deflector
- Electric Deflector
- Urethane Cutting Edge
- Rubber Cutting Edge

Features

- Models to fit tractors from 20 - 75 HP
- Casts snow 30' - 35'
- Optional hydraulic chute rotation and deflector available
- Bolt-on high-carbon steel cutting edge



QUICK SNOW-AWAY™ RM

3-POINT PTO HEAVY-DUTY REAR MOUNT SNOWBLOWER

Model	Part #
925RM	920112
965RM	920113
1085RM	920114

Options

- Hydraulic Deflector
- Electric Deflector
- Hydraulic Truck Loading Chute

Features

- Reversible cutting edge
- Standard hydraulic orbit motor chute rotator
- HP Range 40-175
- Single 18" or dual 16" augers with shear bolt protection



QUICK SNOW-AWAY™ RP

3-POINT PTO REAR PULL

Model	Part #
620RP (60")	920100
725RP (78" w/wings)	920102
825RP (90" w/wings)	920104

Features

- Models to fit tractors from 20 - 75 HP
- Casts snow 30' - 35' with 270° chute rotation
- Optional hydraulic chute rotation and deflector available

Options

- Rear Pull Blade
- Hydraulic Chute Rotator
- Hydraulic Deflector
- Electric Deflector
- Urethane Cutting Edge
- Rubber Cutting Edge
- Urethane Skid Shoes



BRUSH THRASHER™

3-POINT PTO BRUSH MOWER

Model	Part #
60"	920298
66"	920299
72"	920300
78"	920301

Features

- Cut, clear and mulch unwanted brush, thickets, grass and saplings up to 3" in diameter
- Heavy-duty gear box and slip clutch to prevent damage
- Stump Jumper designed to prevent damage to unit
- Operates both forwards and backwards



Options

- Hydraulic Rotation
- Winch
- 3-Point Top Link Cylinder

VERSA GRAB™

3-POINT MULTI-PURPOSE GRAPPLE

Model	Part #
48"	901315
60"	901316

Features

- Includes skid steer mount and 3-point hitch Cat I and II
- 3-inch bore cylinder
- Closes to less than 3 inches

TRACTOR



Options

- Hydraulic Angling Package

QUICK POWER SCAPE 3-POINT™

3-POINT PTO SOIL CONDITIONER

Model	Part #
SC72	920012
SC84	920014
SC96	920015

Features

- Oil bath chain case drive
- Driveline slip clutch protection
- Tungsten - carbide teeth



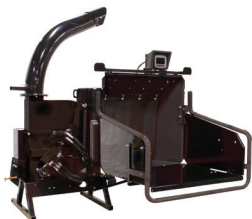
QUICK TURF™

3-POINT SOD ROLLER

Model	Part #
Sod Roller	901336

Features

- Handle sod rolls 24"-48" wide
- Automatic brake for controlled handling
- Relief valve to protect sod rolls from over-squeezing



BIG CHIPPER™

3-POINT PTO BRUSH CHIPPER

Model	Part #
5"	920249
9"	920250

Features

- 5" or 9" Chipper Capacity



QUICK STUMP-AWAY™ 3-POINT

3-POINT PTO STUMP GRINDER

Model	Part #
24"	920158
34"	920159

Features

- Rugged gear box supports 803 ft-lb. or torque
- Designed for 25 - 90 HP tractors
- 65° swing arc

Options

- External Control
- Replacement teeth



SUPER SEEDER™

3-POINT LANDSCAPE SEEDER

Model	Part #
Landscape Seeder 72"	900812
Landscape Seeder 96"	900814

Features

- Front rollers crush lumps, press down small stones, and form a firm seedbed
- 3-point hitch for tractors and mounting plate for skid steers
- Notched rollers place most of the seed at a depth of 1/2"

Options

- Acre Meter Package



BRUSH BUSTER™ MINI

MINI ROTARY BRUSH MOWER

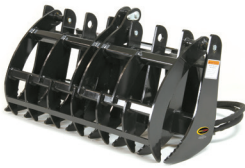
Model	Part #
Mini	900329

Options

- Push Bar
- Replacement Blade Kit

Features

- Cuts moving forward and reverse
- Hydraulic motor with pressure relief operates both directions
- No shear pins or drive clutches



QUICK CLAW™ MINI

MINI GRAPPLE RAKE

Model	Part #
Mini	900303

Features

- Grade 50 steel teeth nearly 40% stronger than regular
- 1 - 3000 psi hydraulic cylinder
- Opens to 36"



QUICK CLEAR™ MINI

MINI GRAPPLE ROD BUCKET

Model	Part #
Mini	900661

Features

- Grade 50 steel nearly 40% stronger than regular steel
- 2 - 3,000 psi hydraulic cylinders
- Rugged tool great for landscaping, demolition, roots, brush, debris, and other difficult-to-grasp material





QUICK COMBO BUCKET™ MINI

MINI 6-IN-1 COMBINATION BUCKET

Model	Part #
Mini	900522

Features

- 2 - 3,000 psi hydraulic cylinders
- Grade 50 steel with side stiffeners nearly 40% stronger than regular

Options

- Bolt-on tooth bar

QUICK SCRAPE-N-GRAB™ MINI

MINI GRAPPLE BUCKET

Model	Part #
Mini	900609

Features

- Move difficult to handle material, such as scrap and waste
- 2 independent cylinders
- Grapples open to approximately 27"

Options

- Bolt-on Cutting Edge
- Bolt-on tooth bar



VERSA GRAB™ MINI

MULTI-PURPOSE GRAPPLE

Model	Part #
Mini	901314

Features

- Closes to less than 3 inches
- Protected grease zerks
- Replaceable grapple insert bushings

Options

- Hydraulic Rotation
- Push Bar





QUICK MOVE™ MINI

MINI LOW PROFILE MATERIAL BUCKET



Model

Mini 36"
Mini 42"
Mini 48"

Part

900747
900748
900749

Features

- Grade 50 steel side stiffeners nearly 40% stronger than regular steel
- Large volume opening

Options

- Cutting Edge
- Teeth Bar

MINI SKID STEER

QUICK PICK-N-SIFT™ MINI

MINI ROD BUCKET



Model

Mini

Part

900671

Features

- Grade 50 steel nearly 40% stronger than regular steel
- Rugged tool great for landscaping, demolition, roots, rocks, brush, debris, and other difficult-to-grasp material
- Designed for digging out materials from demolition work

VERSA BLADE™ MINI

MINI 6-WAY DOZER BLADE



Model

Mini

Part

900510

Features

- Adjustable skid shoes for control of cutting depth
- Standard with tilt cylinder (angle cylinder optional)

Options

- Hydraulic Angling

MINI SKID STEER



QUICK XCAVATOR™ MINI

MINI BACKHOE

Model	Part #
BH780	901072

Features

- Operator seat swings to allow better visibility of work area
- Optimum performance with 5-7 GPM hydraulic system
- Dual cylinder swing provides maximum swinging power

Options

- Tie Back Kit
- Street Pads
- Bucket 9"-24"

BORE PIG™ MINI

MINI EARTH AUGER



Model	Part #
Mini Hex - (direct-drive)	900752
Mini 11PD Hex (Toro)	901320
Mini 11PD Round (Toro)	901323
Mini 14PD Hex (Toro)	901321
Mini 14PD Round (Toro)	901324
Mini 18PD Hex (Toro)	901322
Mini 18PD Round (Toro)	901325
Mini 11PD Hex (Bobcat)	901326
Mini 11PD Round (Bobcat)	901329
Mini 14PD Hex (Bobcat)	901327
Mini 14PD Round (Bobcat)	901330
Mini 18PD Hex (Bobcat)	901328
Mini 18PD Round (Bobcat)	901331

Options

- Standard Duty Bits
- Heavy-Duty Bits

Features

- Direct-drive & planetary gear design
- 2" hex head
- Auger head pivots front-to-back and side-to-side on the direct-drive design



TRENCH-IT™ MINI

MINI TRENCHER



Model	Part #
Mini 4" Cup	901152
Mini 4" 50/50 Cup with Bullet	901153
Mini 4" 50/50 Cup with Scorpion	901154
Mini 6" Cup	901036
Mini 6" 50/50 Cup with Bullet	901037
Mini 6" 50/50 Cup with Scorpion	901038
Mini 8" Cup	901039
Mini 8" 50/50 Cup with Bullet	901040
Mini 8" 50/50 Cup with Scorpion	901041

Features

- Direct-drive design
- 3' boom with crumber shoe that is removable
- 12" spoil auger that is removable

LAND LEVELER™ MINI

MINI PLANER



Model	Part #
Mini	900319

Features

- ½" x 4" front and rear cutting edges
- Center bars aid in leveling and can

Options

- Scarifying Teeth

QUICK TILLER™ MINI

MINI ROTARY TILLER



Model	Part #
Mini	900916

Features

- Tills up to 4" deep
- Bidirectional rotation increases efficiency by saving time and labor
- Direct-drive motor gives higher production with lower maintenance

MINI SKID STEER



Options

- Hydraulic power angling

QUICK POWER SCAPE™ MINI

MINI SOIL CONDITIONER

Model	Part #
48" Soil Conditioner Mini-Rigid Mount	900528
48" Soil Conditioner Mini-Float Mount	900529
60" Soil Conditioner Mini-Rigid Mount	901574
60" Soil Conditioner Mini-Float Mount	901577

Features

- Largest drum in its class @ 7" with 3/8" thick drum wall thickness
- Direct-drive design, depth changes on the go and tungsten - carbide teeth
- Float mount design for a more efficient operation
- Solid rubber wheels; with one pin can be raised out of the way for serious digging
- Side plates are adjustable and removable
- Spiraled teeth for windrowing

STONE DAWG™ MINI

MINI LANDSCAPE RAKE

Model	Part #
Mini	900563

Features

- Picks up material as small as 3/4"
- Adjustable side skids for setting depths
- Exclusive replaceable bolt-on rake bars



Options

- Replacement bolt-on rake bar
- Factory installed couplers

QUICK SCOOP™ MINI

MINI COMMERCIAL SPADE

Model	Part #
Mini	900810

Features

- Sharp digging point
- 1/4" high alloy steel that hardens with use





QUICK STUMP-AWAY™ MINI MINI STUMP GRINDER

Model	Part #
Mini	900549

Features

- Bidirectional cutting design allows for dual pass operation
- 24 - durable carbide teeth – a real time saver, reduces labor
- 1/2" x 14.5" diameter steel plate cutting wheel



MINI SKID STEER



BIG CHIPPER™ MINI MINI BRUSH CHIPPER

Model	Part #
Mini	900789

Features

- Reversible chipper blades for longer life
- 4.5" chipper opening
- 12" x 13" chute opening



QUICK SNOW-AWAY™ MINI MINI HYDRAULIC SNOWBLOWER

Model	Part #
Mini 48" (Model 2020)	901443
Mini 55" (Model 2020)	901445
Mini 61" (Model 2020)	901447

Features

- Replaceable bolt-on high-carbon steel cutting edge
- Hydraulic control valve with electric solenoid controls all chute functions

Options

- Urethane cutting edge; rubber cutting edge
- Serrated auger
- Urethane skid shoes



1-866-428-8224 • www.quickattach.com



QUICK SWEEP™ MINI

MINI POWER ANGLE BROOM

Model	Part #
Mini 48" Man. Angling (w/poly wafer package)	900890
Mini 48" Man. Angling (w/poly/steel wafer package)	900891
Mini 48" Hyd. Angling (w/poly wafer package)	900892
Mini 48" Hyd. Angling (w/poly/steel wafer package)	900893
Mini 48" Hyd. Angling, Reversible (w/poly)	900888
Mini 48" Hyd. Angling, Reversible (w/poly/steel)	900889
Mini 60" Man. Angling (w/poly wafer package)	901578
Mini 60" Man. Angling (w/poly/steel wafer package)	901579
Mini 60" Hyd. Angling (w/poly wafer package)	901581
Mini 60" Hyd. Angling (w/poly/steel wafer package)	901582
Mini 60" Hyd. Angling, Reversible (w/poly)	901584
Mini 60" Hyd. Angling, Reversible (w/poly/steel)	901585

Features

- Direct-drive motor gives higher production with lower maintenance
- Optional power angling available
- Angles 25° to the right and left
- Storage stand comes standard

CLEAN SWEEP™ MINI

MINI PICK-UP BROOM

Model	Part #
Mini (w/poly wafer package)	900894
Mini (w/poly/steel wafer package)	900895



Features

- Direct-drive design
- Adjustable arbor allows control over bristle pressure to surface while extending bristle life
- Replaceable cutting edge



QUICK PUSH™ MINI

MINI SNOW/LIGHT MATERIAL BLADE

Model	Part #
Mini 48"	900338
Mini 60"	900339

Features

- 21.5" curved moldboard
- 3/8" x 4" high-carbon steel cutting edge for long life
- 27° left/right angling

Options

- Urethane Skid Shoes
- Urethane Cutting Edge
- Rubber Cutting Edge
- Hydraulic Angling



MINI SKID STEER



BIG BUCKET™ MINI

MINI SNOW/LIGHT MATERIAL BUCKET

Model	Part #
Mini 48" (Toro)	900649
Mini 48" (ASV)	900650
Mini 48" (Bobcat)	900651
Mini 48" (Avant)	900659
Mini 48" (Universal Skid Steer)	900660

Features

- Large 13.3 cu. feet heaped capacity
- 1/4" grade 50 steel construction side plate wear bars
- 1/4" grade 50 steel construction skid bottom wear plates

Options

- Bolt-on Cutting Edge





Options

- Moil, Blunt, and Chisel Tool Point
- Excavator Mounts

BIG BREAK™ MINI
MINI HYDRAULIC BREAKER

Model	Part #
110X Mini	900545
210X Mini	900539

Features

- Power booster for high performance and lower vibration
- Central lubrication
- Field replaceable bushing for easier maintenance



SKID HITCH™ MINI
MINI SKID HITCH

Model	Part #
Mini M1 for Toro / Vermeer / Boxer / Ditch Witch / Ramrod / Kanga / Cormidi	900642
Mini M2 for ASV / Terex	900643
Mini M3 for Bobcat	900644

Features

- Move equipment quickly without breaking your back
- Direct and guide into tight quarters



QUICK LIFT-N-STACK HD™ MINI
MINI HEAVY-DUTY PALLET FORKS

Model	Part #
Mini HD 42" (Toro)	901671
Mini HD 48" (Toro)	901672
Mini HD 42" (Bobcat)	901667
Mini HD 48" (Bobcat)	901668
Mini HD 42" (ASV/Terex)	901669
Mini HD 48" (ASV/Terex)	901670

Features

- Adjustable width from 8" to 45"
- New brick guard design
- 1,300 lb. capacity



INDEX PAGE

SKID STEER ATTACHMENTS

Mowers

Commercial Brush Mower..... Page 1
 Industrial Rotary Brush Mower..... Page 2
 Dual Rotary Brush Mower..... Page 2
 Industrial Open Front Skid Steer Brush Cutter... Page 2
 Extreme Heavy-Duty Brush Mower... Page 3

Grapples

Industrial Grapple Rake..... Page 3
 Industrial Log, Brush & Rock Grapple..... Page 4
 Skeleton Grapple Rock Bucket..... Page 4
 HD Skeleton Grapple Rock Bucket..... Page 4
 Multi-Purpose Grapple..... Page 5
 Grapple Stump Bucket..... Page 5

Buckets

4-in-1 Combination Bucket..... Page 6
 Grapple Bucket..... Page 6
 Bale Spear..... Page 6
 Stump Bucket..... Page 7
 Low Profile Material Bucket/ XHD..... Page 7
 Skeleton Rock Bucket/ HD..... Page 7
 Commercial Spade..... Page 8
 Concrete Bucket..... Page 8

Backhoes

Commercial Digging Backhoe..... Page 8
 Industrial Digging Backhoe..... Page 9
 Backhoe..... Page 9

Augers

Commercial Earth Auger..... Page 10
 Industrial Earth Auger..... Page 10

Soil Attachments

Heavy-Duty Trencher..... Page 11
 Planer..... Page 12
 Rotary Tiller..... Page 12
 Commercial Soil Conditioner..... Page 13
 Heavy-Duty Soil Conditioner..... Page 13
 Landscape Rake..... Page 14
 3 PT Landscape Seeder..... Page 14
 Sod Roller..... Page 14

Tree Attachments

Commercial Tree Puller..... Page 15
 Heavy-Duty Tree Puller..... Page 15
 Tree Spade..... Page 16
 Commercial Tree Shears..... Page 16
 Industrial Tree Shears..... Page 17

Inverted Log Splitter..... Page 17
 Stump Removal Bit..... Page 18
 Stump Grinder..... Page 18
 Brush Chipper..... Page 19
 Heavy-Duty Forestry Mulcher..... Page 19
 Forestry Mulching Mower..... Page 20

Construction Attachments

Teleboom..... Page 20
 6-Way Dozer Blade/Grader/Leveler..... Page 21
 Post Driver..... Page 21
 Hydraulic Post Driver..... Page 22
 Concrete Mixer..... Page 22
 Hydraulic Breaker..... Page 23
 Cold Planer..... Page 23
 Pavement Saw..... Page 24
 Heavy-Duty Rock Saw..... Page 24
 Vibratory Packer..... Page 24

Pallet Forks

Pallet Forks..... Page 25
 Hydraulic Pallet Forks..... Page 25

Hitch & Tilt Attachments

Skid Steer Hitch..... Page 26
 Tilt Attachment..... Page 26

Brooms

Power Angle Broom..... Page 27
 Heavy-Duty Power Angle Broom..... Page 28
 Pick-up Broom..... Page 29
 Heavy-Duty Pick-up Broom..... Page 29
 Dust Control Water Kit..... Page 29

Snow Attachments

Snow/Light Material Blade..... Page 30
 Snow/Light Material Bucket..... Page 30
 Commercial Snow Pusher..... Page 30
 Industrial Snow Pusher..... Page 31
 V-Flow..... Page 31
 Salt, Sand & Fertilizer Spreader..... Page 31
 Commercial Hydraulic Snowblower..... Page 32
 Industrial Hydraulic Snowblower..... Page 32

TRACTOR ATTACHMENTS

Snow Attachments

Hydraulic Power Unit..... Page 33
 Commercial Hydraulic Power Unit..... Page 33
 2020 Snowblower w/Hydraulic Power Unit..... Page 34
 Snowblowers w/ Com. Hyd Power Unit..... Page 34

3 PT Rear Mount PTO Snowblower..... Page 35
 3 PT HD Rear Mount PTO Snowblower..... Page 35
 3 PT Rear Pull PTO Snowblower..... Page 36

Other Attachments

3 PT PTO Brush Mower..... Page 36
 Multi-Purpose Grapple..... Page 37
 3 PT PTO Soil Conditioner..... Page 37
 3 PT Sod Roller..... Page 37
 3 PT PTO Brush Chipper..... Page 38
 3 PT PTO Stump Grinder..... Page 38
 3 PT PTO Landscape Seeder..... Page 38

MINI SKID STEER ATTACHMENTS

All

Mini Rotary Brush Mower..... Page 39
 Mini Grapple Rake..... Page 39
 Mini Grapple Rod Bucket..... Page 39
 Mini 6-in-1 Combination Bucket..... Page 40
 Mini Grapple Bucket..... Page 40
 Mini Multi-Purpose Grapple..... Page 40
 Mini Low Profile Material Bucket..... Page 41
 Mini Rod Bucket..... Page 41
 Mini 6-Way Dozer Blade..... Page 41
 Mini Backhoe..... Page 42
 Mini Earth Auger..... Page 42
 Mini Trencher..... Page 43
 Mini Planer..... Page 43
 Mini Rotary Tiller..... Page 43
 Mini Soil Conditioner..... Page 44
 Mini Landscape Rake..... Page 44
 Mini Stump Grinder..... Page 45
 Mini Brush Chipper..... Page 45
 Mini Hydraulic Snowblower..... Page 45
 Mini Power Angle Broom..... Page 46
 Mini Pick-Up Broom..... Page 46
 Mini Snow/Light Material Blade..... Page 47
 Mini Snow/Light Material Bucket..... Page 47
 Mini Hydraulic Breaker..... Page 48
 Mini Skid Hitch..... Page 48
 Mini HD Pallet Forks..... Page 48

AVAILABLE ACCESSORIES

Universal Attachment Plates, Over-The-Tire Tracks Attachment Adapters, Teeth Bar, and 7 Pin Compatibility Kits



WE TAKE TRADE-INS

ASK ABOUT CERTIFIED PRE-OWNED ATTACHMENTS

Find certified pre-owned attachments at www.quickattach.com. Sign up for emails to get discounts and special offers on attachments.



Certified PRE-OWNED ATTACHMENTS

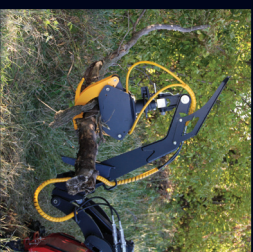
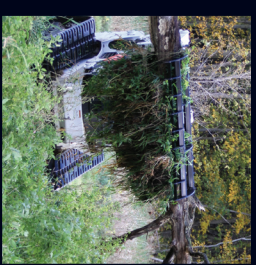
Quick Attach® Certified pre-owned attachments are tested against our comprehensive Certified pre-owned attachment inspection checklist by a trained attachment quality technician. Each attachment receives:

- Thorough Cleaning
- Safety Inspection
- Test Bench or Power Unit
- 30 Day Warranty
- Performance and Workmanship Verification
- Pre-Owned Checklist
- Palletization



*On purchase of \$15,000 or more with your Cutting Edge credit card. Prices reflected do not include any options or freight F.O.B Fosston, MN. Qualifying purchase amount must be on one receipt. A promotion fee will be charged and included in the promotional purchase balance equal to \$50 for promotions 12-18 months; \$150 for promotions 19 months or longer. No monthly interest will be charged on promo purchase balance, including related promotion fee, and equal monthly payments are required until promo is paid in full. These payments equal the initial promo purchase amount divided by the number of months in the promo period and rounded up to the next whole dollar. These payments may be higher than the payments that would be required if this purchase was a non-promo purchase. Regular account terms apply to non-promo purchases. For new accounts: Purchase APR is 26.99%. Minimum interest charge is \$2. A grace period of 23 days and a daily computation method for calculating interest. Existing cardholders: See your credit card agreement terms. Subject to credit approval.

1-866-428-8224 • www.quickattach.com



ASK ABOUT OUR **0%** FINANCING FOR UP TO 24 MONTHS *O.A.C.

SEE PAGE 69 FOR TERMS AND CONDITIONS.



Quick Attach® Attachments, LLC
 5181 State Highway 29 N
 Alexandria, MN 56308

1-866-428-8224
www.quickattach.com

