



Screening & Crushing Buckets

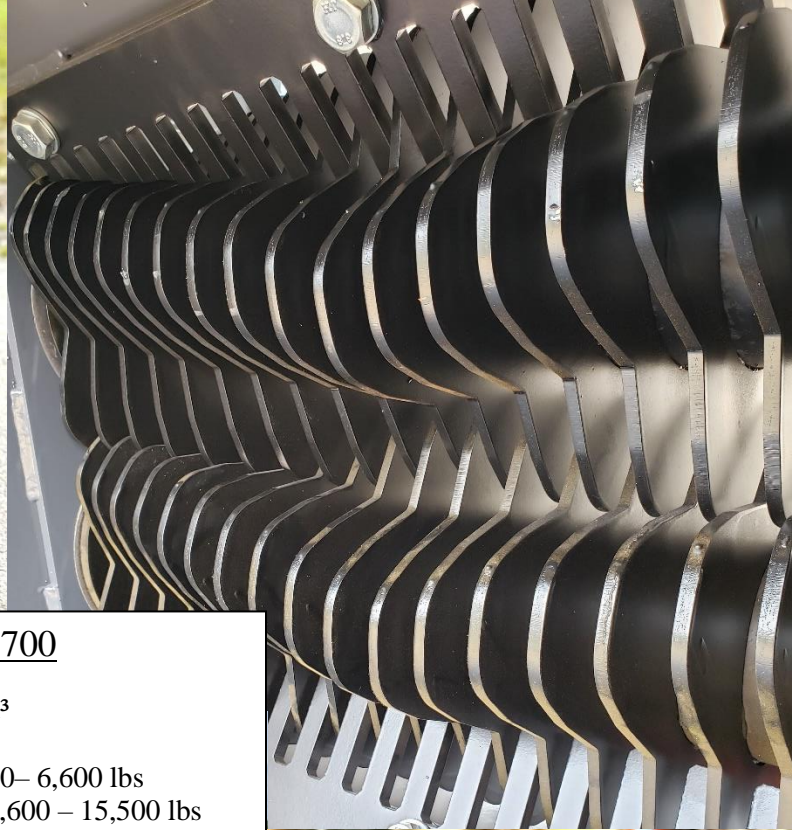


RECLAIM - RECYCLE - REUSE - REDUCE

KBI Warehouse & Distribution

Ken Burns Inc
985 East Main Street
Manchester, IA 52057

Phone: (563) 927-2307
Email: kbiwdc@gmail.com
Website: www.kenburnsinc.com



Vipermetal 2-700

Capacity: 0.24 yd³
Weight: 700 lbs
Loader Size: 4,400– 6,600 lbs
Excavator Size: 6,600 – 15,500 lbs
Dimensions: Width 35"
Depth 31"
Height 30"

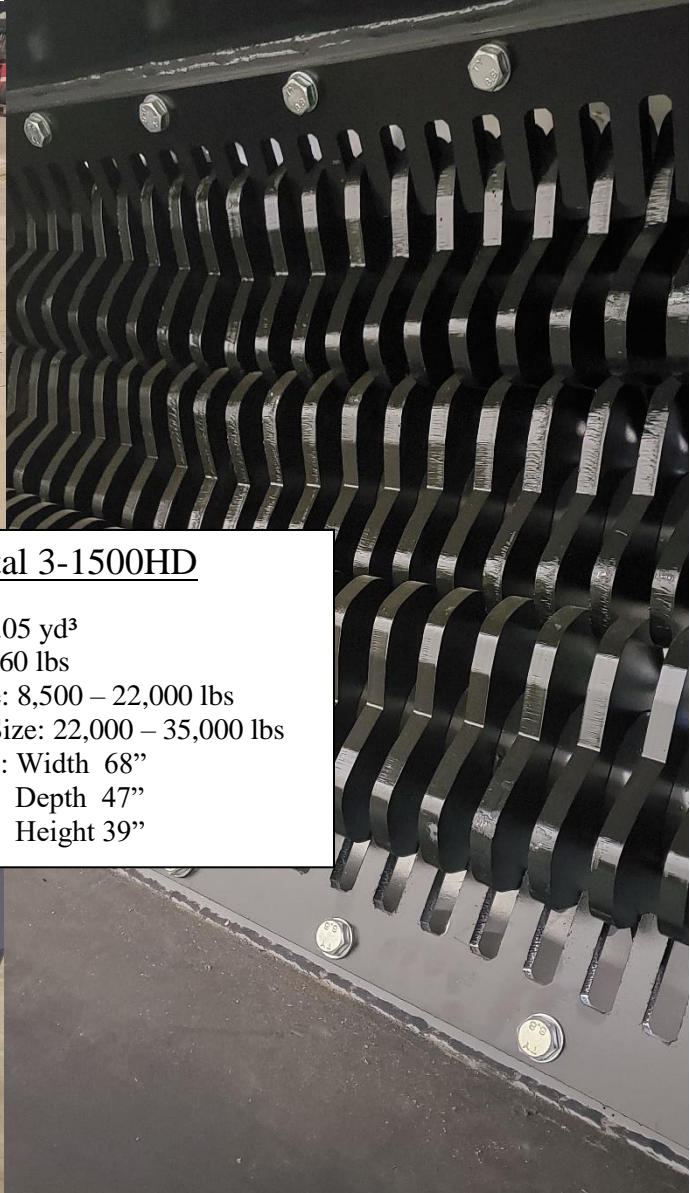




Vipermetal 2-1500HD

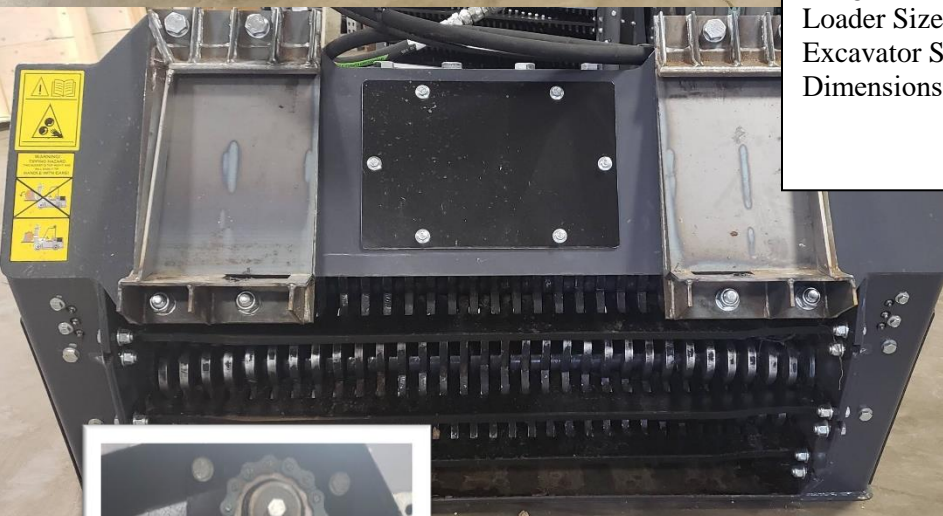
Capacity: 0.9 yd³
Weight: 1,640 lbs
Loader Size: 8,000 – 12,000 lbs
Excavator Size: 19,000 – 30,000 lbs
Dimensions: Width 64"
 Depth 40"
 Height 34"

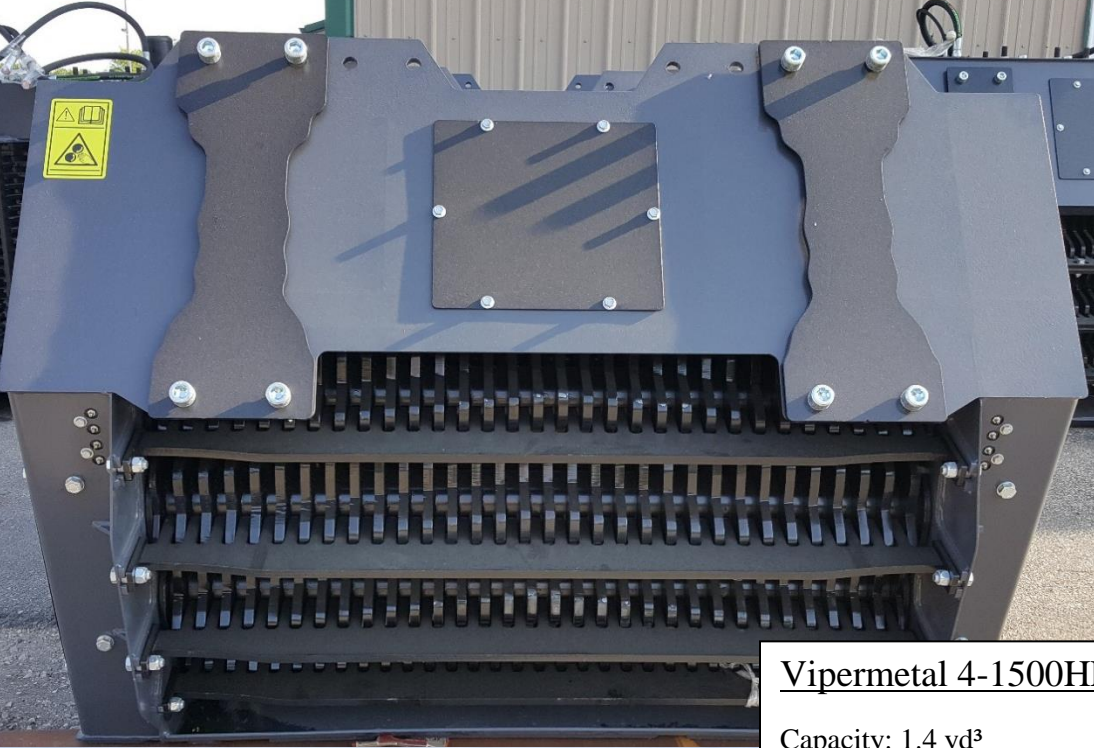




Vipermetal 3-1500HD

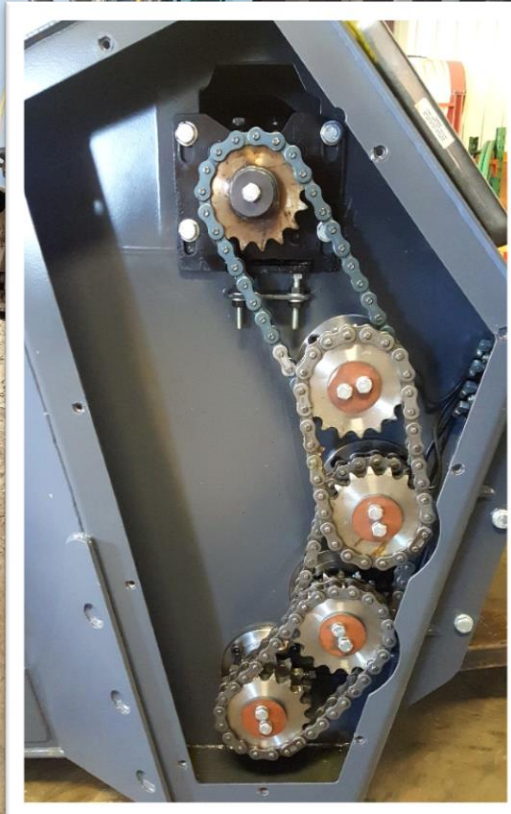
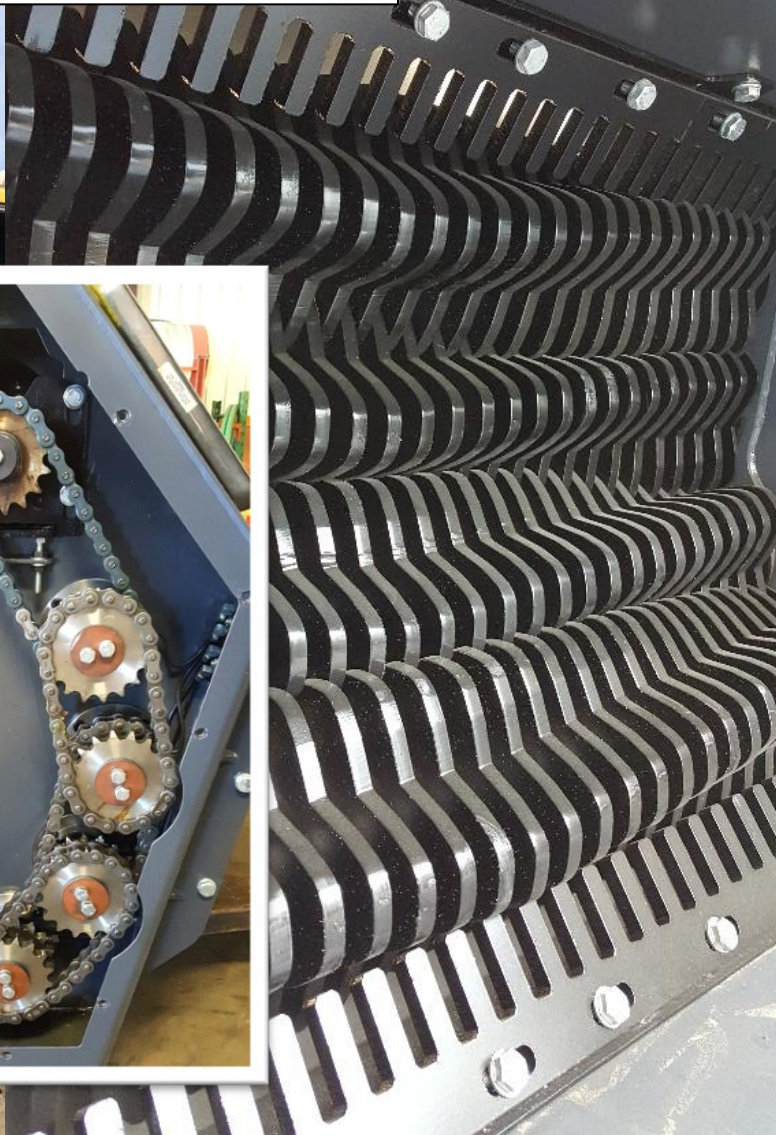
Capacity: 1.05 yd³
Weight: 2,160 lbs
Loader Size: 8,500 – 22,000 lbs
Excavator Size: 22,000 – 35,000 lbs
Dimensions: Width 68”
 Depth 47”
 Height 39”





Vipermetal 4-1500HD

Capacity: 1.4 yd³
Weight: 3,350 lbs
Loader Size: 20,000 – 33,000 lbs
Excavator Size: 29,000 – 46,000 lbs
Dimensions: Width 69"
 Depth 47"
 Height 47"





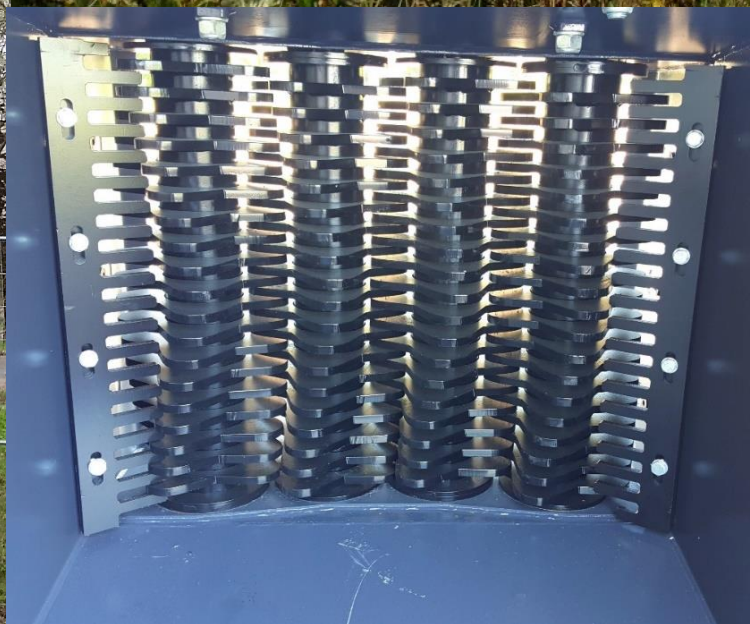
Vipermetal 3-1720HD

Capacity: 3.0 yd³
Weight: 5,400 lbs
Loader Size: 26,500 – 35,000 lbs
Excavator Size: 48,500 – 55,000 lbs
Dimensions: Width 81"
 Depth 69"
 Height 55"





Vipermetal 4-1100HD
Capacity: 1.4 yd³
Weight: 3,350 lbs
Loader Size: N/A
Excavator Size: 35,300 – 48,500 lbs
Dimensions: Width 51"
 Depth 53"
 Height 57"





SPECIFICATIONS



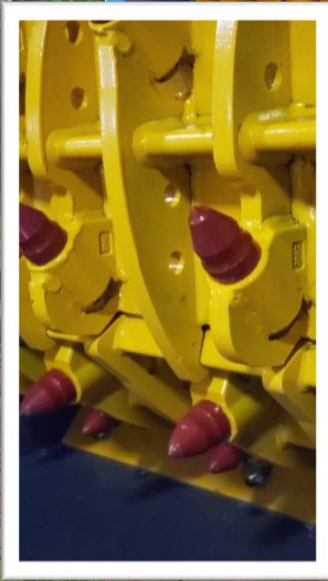
Model	Base Machine 1000 lbs		Hydraulic Flow	Volume Yd ³		Dimensions Inches			Weight lbs
	Excavator	Loader		GPM	ISO	SAE	W	D	
2-700	6-15	4-6	19	.19	.24	35	31	30	700
2-1500HD	19-30	8-12	19	0.7	1.0	64	40	34	1,640
3-1500HD	22-35	9-22	20	.91	1.05	68	47	39	2,160
4-1500HD	29-46	20-33	40	1.6	1.9	69	47	47	3,350
3-1720HD	49-55	27-40	40	3.0	3.3	81	69	55	5,400
4-1100HD	35-48	XX	40	1.3	1.6	51	53	57	3,350

*Vipermetal has a policy of continuing improvement and reserves the right to change specifications without prior notice.





Vipermetal VPCH-21
Capacity: 1.7 yd³
Weight: 6,400 lbs
Loader Size: N/A
Excavator Size: 48,300 – 66,000 lbs
Dimensions: Width 64"
 Depth 70"
 Height 57"



MB[®]

THE CRUSHING EVOLUTION

MB Crusher for Loaders

Model	Loader Size	Capacity
MB-L120	6 - 15	.26 cy
MB-L140	6 - 17	.32 cy
MB-L160	10 - 22	.45 cy
MB-L200	13 - 22	.58 cy



MB[®]

THE CRUSHING EVOLUTION



MB Crusher for Excavators

Model	Excavator Size	Capacity
MB-BF60.1	17 – 31	.72 cy
MB-BF70.2	31 – 41	.86 cy
MB-BF80.3	41 – 46	.91 cy
MB-BF90.3	46 – 66	1.17 cy
MB-BF120.4	66 – 94	1.70 cy
MB-BF135.8	94 – 154	2.09 cy
MB-BF150.10	> 154	3.00 cy

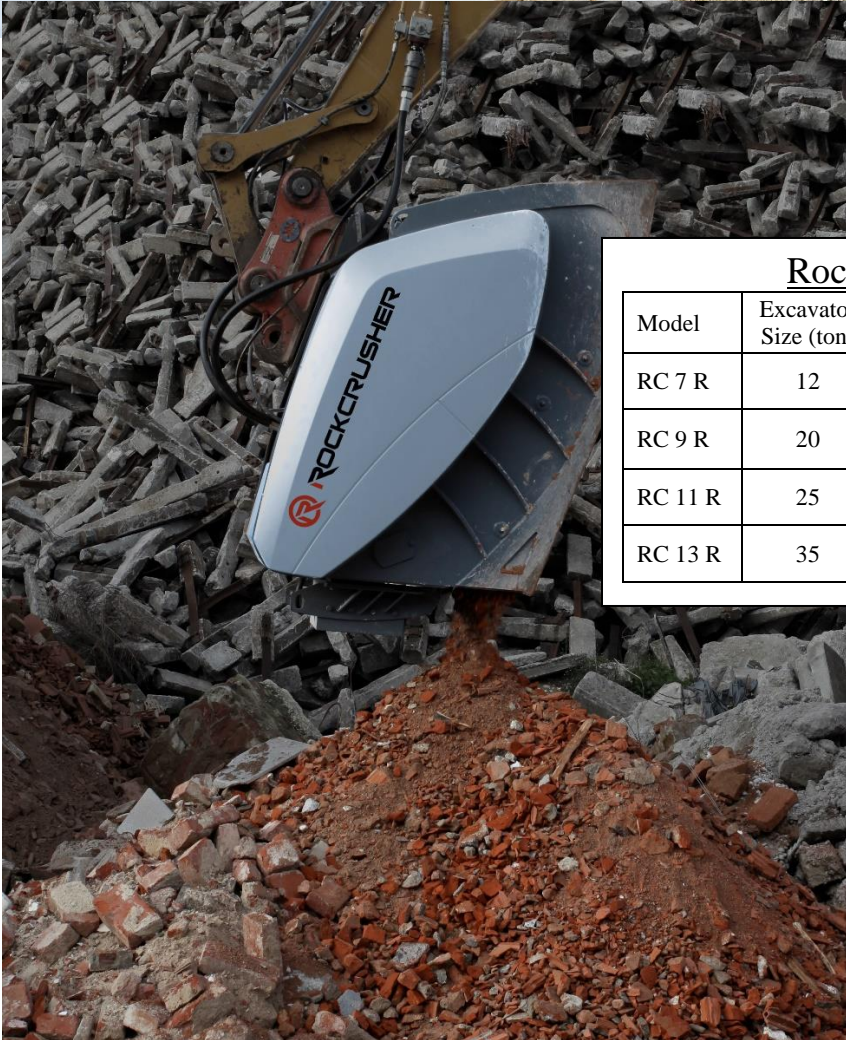
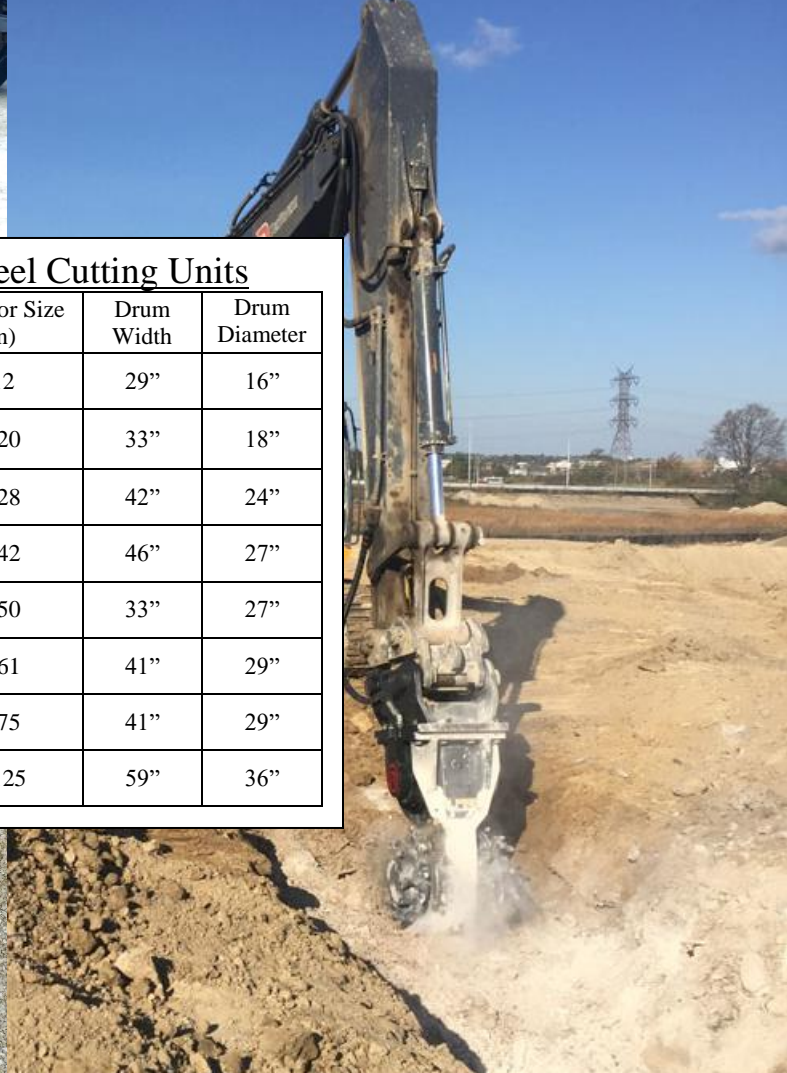
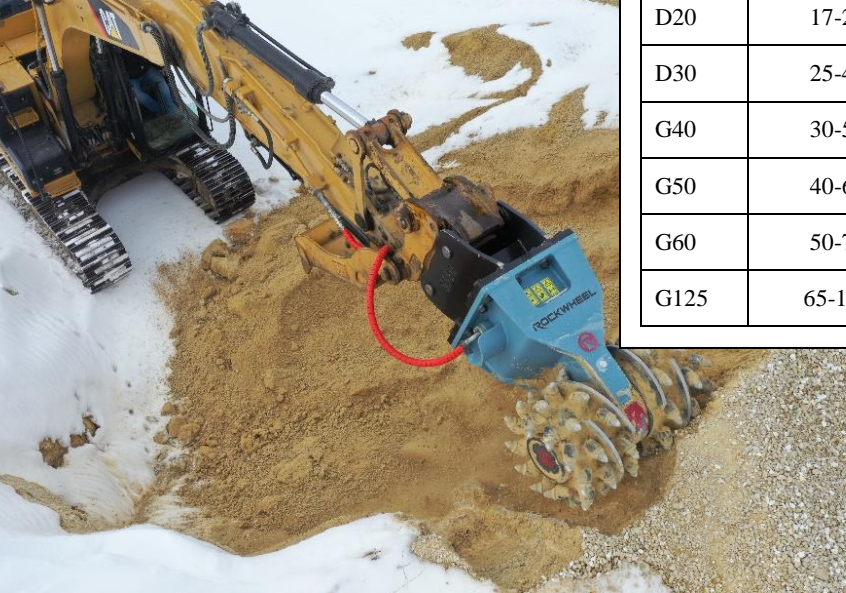


ROCKWHEEL



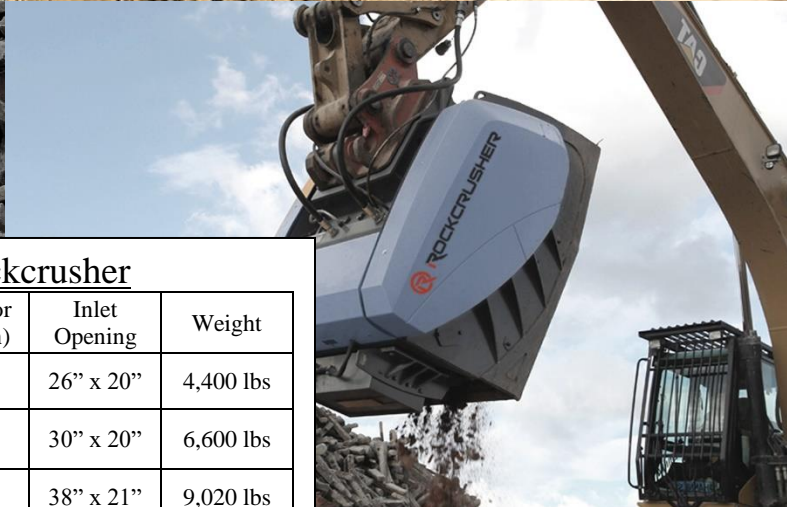
Rockwheel Cutting Units

Model	Excavator Size (ton)	Drum Width	Drum Diameter
D10	8-12	29"	16"
D15	13-20	33"	18"
D20	17-28	42"	24"
D30	25-42	46"	27"
G40	30-50	33"	27"
G50	40-61	41"	29"
G60	50-75	41"	29"
G125	65-125	59"	36"



Rockcrusher

Model	Excavator Size (ton)	Inlet Opening	Weight
RC 7 R	12	26" x 20"	4,400 lbs
RC 9 R	20	30" x 20"	6,600 lbs
RC 11 R	25	38" x 21"	9,020 lbs
RC 13 R	35	49" x 23"	13,420 lbs



Applications



REDUCE - RECYCLE - REUSE

- Top Soil / Compost
- Sand Bag Separation
- Asphalt Fines
- Street Sweepings
- Wood Chips
- Salt
- Pipeline Padding
- Fill Lime



TOPSOIL / COMPOST







SAND BAG SEPARATION

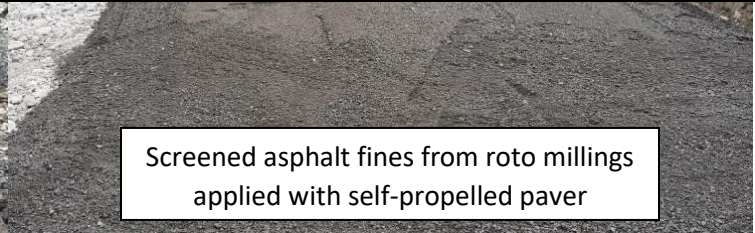




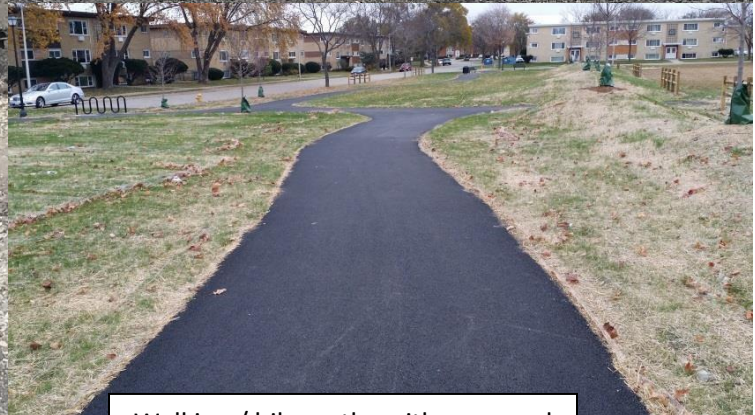
ASPHALT FINES



"Overs" after screening out asphalt fines



Screened asphalt fines from roto millings applied with self-propelled paver



Walking / bike paths with screened asphalt fines as sub base

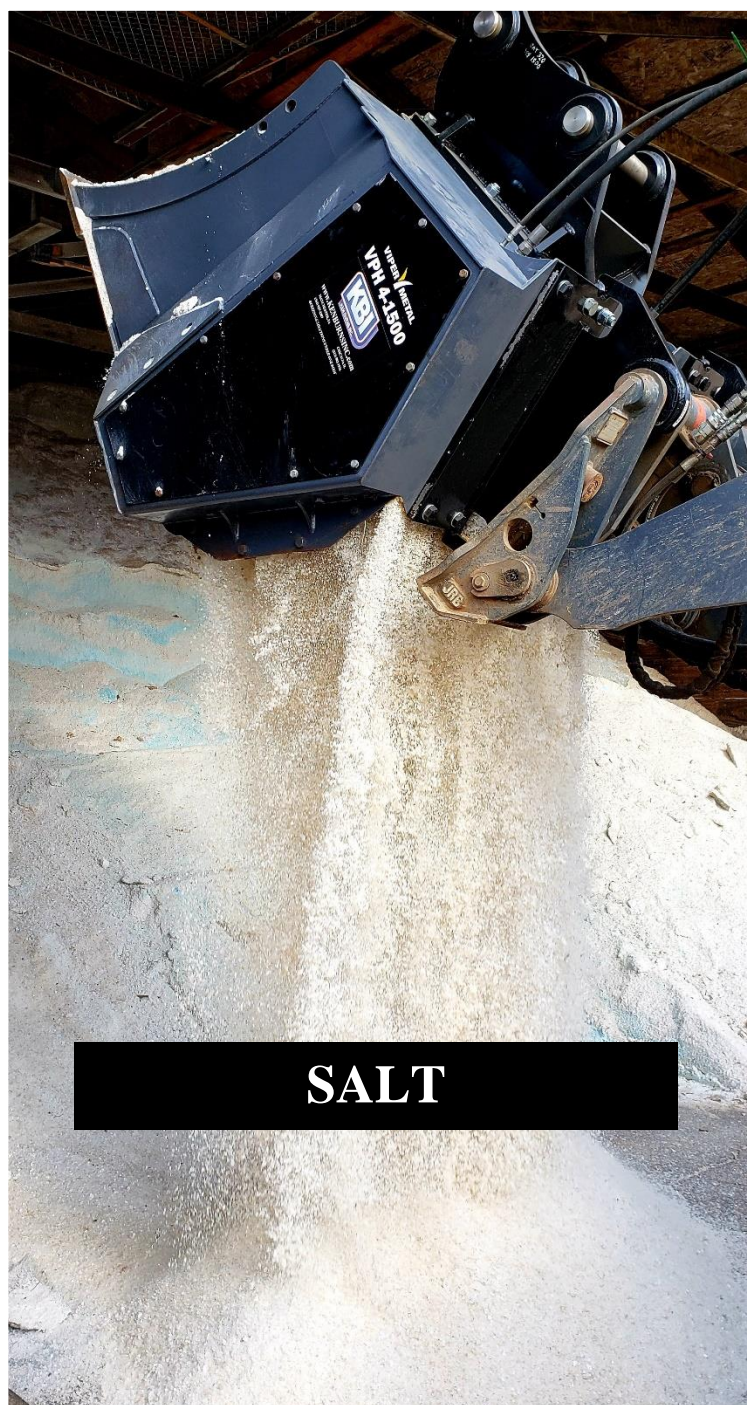




STREET SWEEPINGS



WOOD CHIPS



SALT



PIPELINE PADDING



FILL LIME

War Memorial Built With Screened Sweepings

Saves City Money

Every year the city of Manchester, IA rents a screening bucket to sift out garbage from their street sweepings. On July 18, 2018 they rented a Vipermetal 3-1700 (2.7 cubic yard) bucket and put it on their John Deere 544K loader. In the matter of 4 hours they had completed screening the entire spoil pile. Street Superintendent Jason Haight estimated that they had roughly 200 ton of raw unscreened material to start. When they were finished screening they had less than one ton of garbage that they hauled away. He estimates they saved \$10,000 in the process. Jason plans to use the screened street sweepings for fill for their new city shop.



In 2017 the city of Manchester used their screened street sweepings for the base on their new war memorial.



Over the past few years they have also stockpiled top soil from street projects which consisted of dirt, sod, sticks and rocks. Just this past week they screened their pile with the same Vipermetal 3-1700 bucket. They plan on using the screened material for curb backfill on a new street project they are finishing up.





KBI Warehouse & Distribution Center

Ken Burns Inc
985 East Main Street
Manchester, IA 52057

Phone: (563) 927-2307
Email: kbiwdc@gmail.com
Website: www.kenburnsinc.com

KBI Chicago

Contact: Mike Green
Phone: (312) 502-1536
Email: jmichaelgreen@gmail.com

